

## CRYSTALLINE BORON

### GRADE K1, GRADE K2, GRADE P1

<b>Chemical Formula</b>	B
<b>Chemical Name</b>	Crystalline Boron
<b>Description of Product</b>	Rhombohedral crystallographic phase
<b>HS Number</b>	2804501
<b>Grades Available</b>	<b>Product Designation</b> Crystalline Boron Grade K1 Crystalline Boron Grade K2 Crystalline Boron Grade P1 <sup>e)</sup>

### Chemical Characteristics

(Mass fraction in % [cg/g]; ppm [µg/g])

		Grade K1		Grade K2		Grade P1	
B	min.	99.4	%	99.4	%	98.0	%
C	max.	0.3	%	0.3	%	0.75	%
N	max.	0.05	%	0.05	%	0.1	%
O	max.	0.1	%	0.1	%	0.5	%
Al	max.	0.1	%	0.1	%	0.1	%
Fe	max.	0.1	%	0.1	%	0.25	%
Mn	max.	0.1	%	0.1	%	0.1	%
Si	max.	0.2	%	0.2	%	0.2	%

### Physical Characteristics

Nominal Particle Size <sup>x)</sup>	1 - 20 mm	3 - 8 mm
Particle Size Distribution <sup>1)</sup> < 38 µm	min.	95%
Specific Surface Area <sup>2)</sup>	0.6	- 2.0 m <sup>2</sup> /g
Apparent Density <sup>3)</sup>	8	12 g/inch <sup>3</sup>

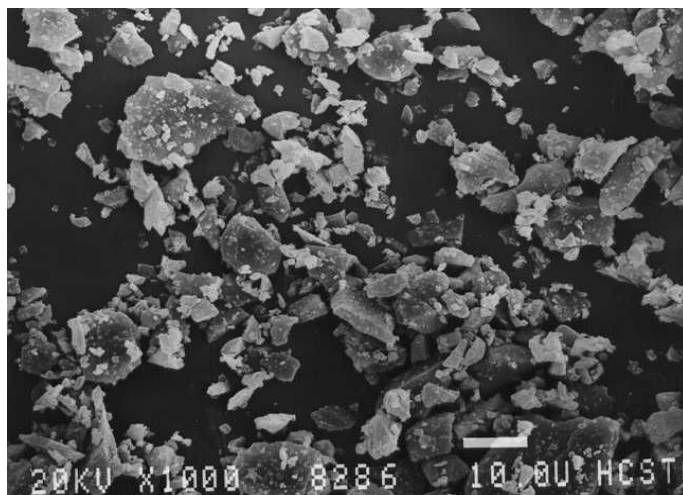
1) ALPINE Air Jet Screening, 2) Tri Star 3000 3-point, by BET per ASTM D 3663,

3) SCOTT-VOLUMETER per ASTM B 329, e) This product is under export control, x) Material is screened to meet the nominal particle size range. Due to their irregular shape, particles with smaller or larger diameter are embodied. This natural material characteristic is excluded as a subject of rejection.

Photomicrograph  
scale see photograph,  
Crystalline Boron Grade K1



SEM Photomicrograph<sup>4)</sup>  
scale see photograph,  
Crystalline Boron Grade P1



## Packaging

### **Standard for large quantities:**

50 kg steel drums (60 l) with polyethylene inlet.  
8 drums on one pallet CP1  
(1000x1200 mm) = 1 Packaging unit of 400 kg.

### **Standard for small quantities:**

2.5 kg polyethylene bottles (2.5 l).  
6 bottles in one carton  
(300 x 400 mm) = 1 packaging unit of 15 kg.  
Other packaging / quantity on request.

### **Lot Size**

Höganäs crystalline Boron is available in homogeneous  
lots up to: Grade K1, K2 200 kg  
Grade P1 500 kg

4) Secondary Electron Image (SEI).

**Storage and Handling** Storage and handling are subject to the rules and regulations in the country of use. Store in a closed container.

**Hazards identification in Advertising (REGULATION (EC) No 1272/2008)**

Crystalline Boron Grade K2

Crystalline Boron Grade P1

None.

**Hazards identification in Advertising (REGULATION (EC) No 1272/2008)**

Crystalline Boron Grade K1

Reproductive toxicity Category 1B - (H360)

Signal word

Danger



Hazard statements H360FD

May damage fertility.

May damage the unborn child.

Contains Boron Oxide.

**Documentation**

An inspection document in accordance with EN 10204 is supplied with every shipment.

**Höganäs Germany GmbH**

Im Schleeke 78-91  
38642 Goslar/Germany

Säckinger Straße 51  
79725 Laufenburg/Germany

<https://www.hoganas.com/en/contact/>

The conditions of your use and application of our products, technical assistance and information (whether verbal, written or by way of production evaluations), including any suggested formulations and recommendations, are beyond our control. Therefore, it is imperative that you test our products, technical assistance and information to determine to your own satisfaction whether they are suitable for your intended uses and applications. This application-specific analysis at least must include testing to determine suitability from a technical as well as health, safety, and environmental standpoint. Such testing has not necessarily been done by Höganäs Germany GmbH. All information is given without warranty or guarantee. It is expressly understood and agreed that the customer assumes and hereby expressly releases Höganäs Germany GmbH from all liability, in tort, contract or otherwise, incurred in connection with the use of our products, technical assistance and information. Any statement or recommendation not contained herein is unauthorized and shall not bind Höganäs Germany GmbH. Nothing herein shall be construed as a recommendation to use any product in conflict with patents covering any material or its use. No license is implied or in fact granted under the claims of any patent. In case of order please refer to issue number of the respective product data sheet. All deliveries are based on the latest issue of the product data sheet and the latest version of our General Conditions of Sale and Delivery.